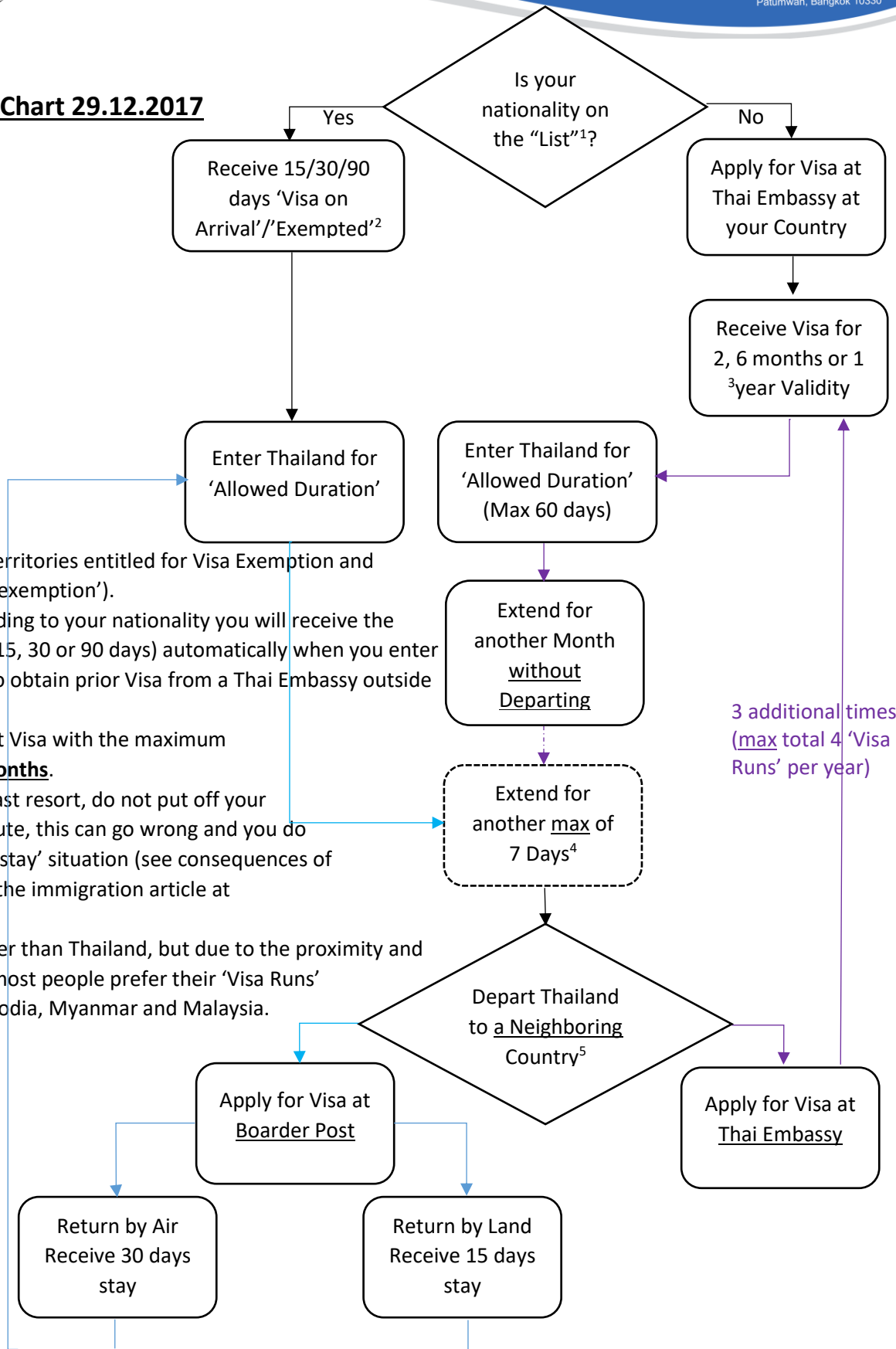


Tourist Visa Flow Chart 29.12.2017



3 additional times (max total 4 'Visa Runs' per year)

1. The List of Countries and Territories entitled for Visa Exemption and Visa on Arrival ('VOA Visa exemption').
2. 'Allowed Duration'- According to your nationality you will receive the allowed duration of stay (15, 30 or 90 days) automatically when you enter Thailand without having to obtain prior Visa from a Thai Embassy outside Thailand.
3. Most Thai embassies grant Visa with the maximum 'Allowed Duration' of **2 months**.
4. Use this option only as a last resort, do not put off your 'Visa Run' for the last minute, this can go wrong and you do not want to be in an 'Overstay' situation (see consequences of overstay in Section 1.4 of the immigration article at [])
5. Can be to any country other than Thailand, but due to the proximity and saving of time and costs, most people prefer their 'Visa Runs' to be made to Laos, Cambodia, Myanmar and Malaysia.